

SUNDAY SERVICE GUIDELINES

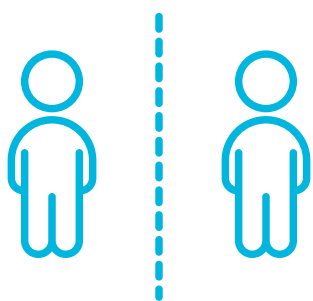
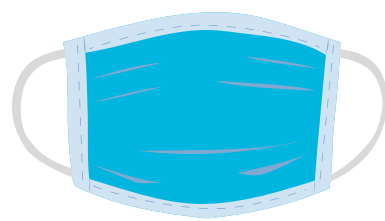


CHECK IN

Prior to entering the sanctuary, proceed through our "Check In" screening process.

WEAR A MASK

Face mask/covering should be worn at all times. Help us make church a safe place.

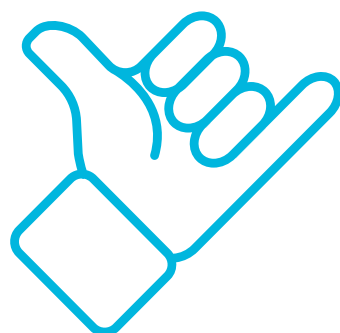


SOCIAL DISTANCE

Maintain 6 feet physical distance from anyone OTHER THAN HOUSEHOLD MEMBERS, even while seated in the sanctuary.

SHAKA

No handshakes or hugs. Also, no laying on of hands on others during ministry time. Greet others with shakas!



RESTRICTIONS

Certain rows of seating will be blocked off to help enforce social distancing. Do not sit in these areas. The playground, nursery, and toys will all be closed and off limits.

FAMILIES

Families with children are welcomed to attend; however, NO CHILDCARE will be available which includes but is not limited to Nursery, Children's Ministry or Youth Ministry. Be responsible to monitor your own children.



QUESTIONS? ASK OUR STAFF!

LOVE. LIFE. LEGACY

www.excelhawaii.com